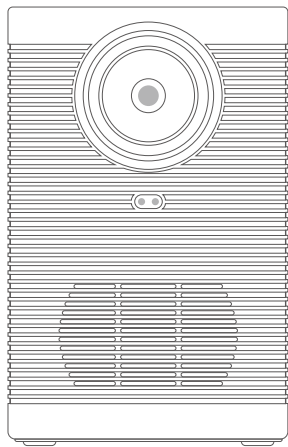


PX1

Music Projector



User Manual

Introduction

We are committed to continuously improving and enhancing product performance. The images and functional descriptions provided in this manual are based on the actual product and factory settings. We reserve the right to make improvements to the product's features and user interface without prior notice. Please refer to the actual product for final confirmation.

Please ensure that you take proper care of your device. We are not responsible for any losses incurred due to software or hardware misuse, repairs, or any other reasons. We also disclaim any liability for losses resulting from the disclosure of personal information to third parties. Additionally, we are not liable for any third-party claims arising from the use of this product.

This manual has undergone careful review and proofreading by our staff. If there are still any omissions, we apologize for any inconvenience and welcome your corrections.

Safety Precautions

1. When using the product, ensure that the air vents are not blocked or obstructed. This will prevent the projector from overheating and potentially getting damaged.
2. Avoid dropping or impacting the product from heights to prevent damage to internal electronic components.

3. Do not look directly into the optical lens to avoid potential eye injury from strong light.
4. Use a clean air blower to remove dust from the surface of the lens.
5. Do not use chemicals, cleaning agents, or water to clean the equipment to prevent damage to the circuit boards due to corrosion.
6. Do not store the device in excessively hot or cold environments. The recommended storage and operating temperature range is typically 0°C to 40°C.
7. Avoid throwing, hitting, or subjecting the product to strong vibrations to prevent damage to the internal circuit boards.
8. Do not attempt to disassemble the device on your own. If you encounter any issues, please contact authorized professional personnel for assistance. Do not attempt self-repair.
9. Use the official provided adapter to charge the device.

Warning: (1) Our brand will not be held liable for any personal injury, property damage, or other losses resulting from failure to follow the instructions or safety precautions provided in the product manual. (2) Operating this device in residential environments may cause wireless interference.



The device is designed for use in non-tropical climate conditions, with a maximum expected operating temperature of 25°C.

Product List



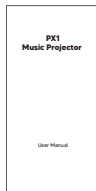
Main Unit



Remote Control

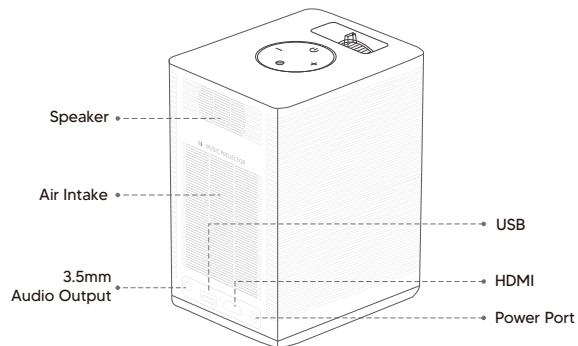
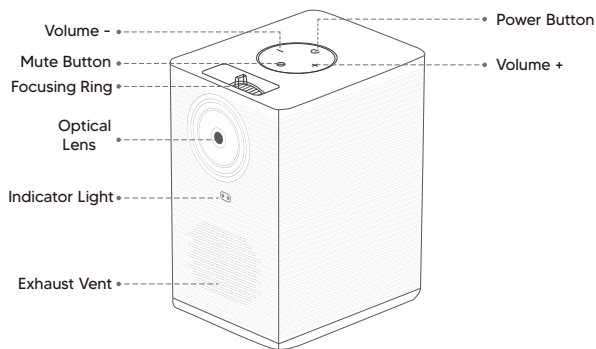


Power Adapter

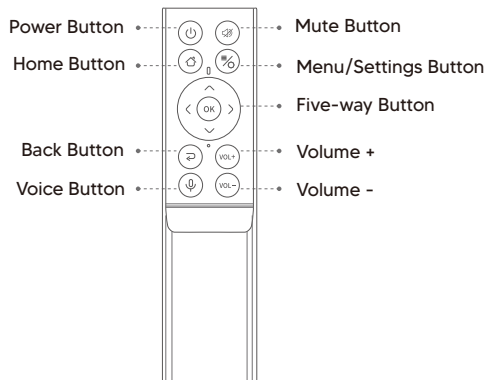


User manual

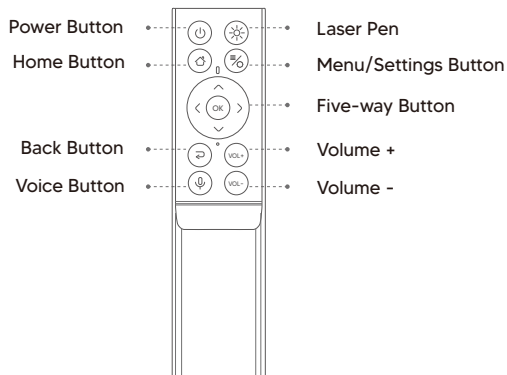
1 X1 projector detailed illustrations



2 Remote Control Detailed Illustrations

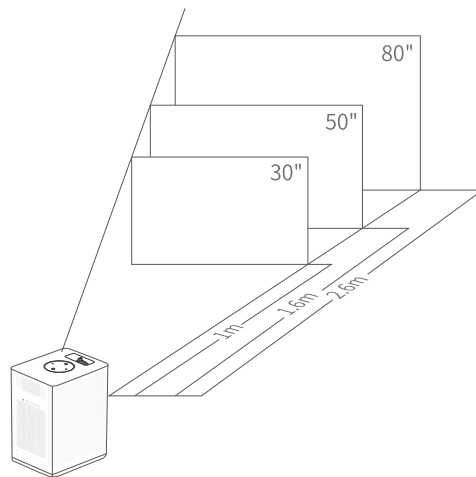


C1 Remote Control



C1 Pro Remote Control

3 Projection Distance and Size

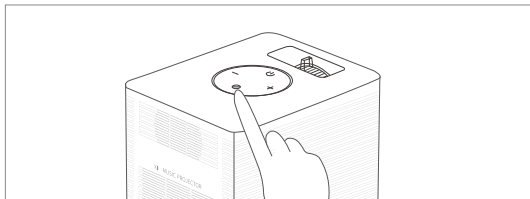


• The distance between the projector lens and the screen, the zoom ratio settings, and the video format all affect the size of the projected image.

• The projected area is directly proportional to the projection distance: the farther the projection distance, the larger the projected area, but the corresponding image clarity may decrease. Users can choose the appropriate projection distance based on their actual usage conditions.

The distance between product and surface	1m	1.6m	2.6m
Projected size	30"	50"	80"

4 Power On/Off



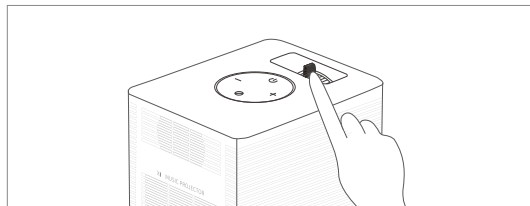
Power On: Press and hold the device's power button for approximately 3 seconds to turn it on.



Power Off: (1) Press and hold the power button on the remote control or projector to access the options menu, then select "Power Off." (2) Press and hold the power button on the projector until it forcibly shuts down.

5 Focus Adjustment

Turn the top knob on the camera body to focus.



6 Remote Control Pairing



10 centimeters



Bring the remote control close to the projector, at a distance of approximately 10 centimeters. Simultaneously press the Home button and Menu button on the remote control. The indicator light on the remote control will start flashing, indicating that it has entered pairing mode. Once the indicator light starts flashing, you can release the buttons, but the indicator light will continue to flash. Wait for the projector to emit a "beep" sound, indicating a successful connection. If the pairing is not successful within 30 seconds, it will exit. In such cases, repeat the above steps to try again.

7 Remote Control Function Explanation

① **Power Button:** Press and hold the power button on the remote control for 3 seconds to shut down.

② Mute Button (for C1): Press this button briefly to activate the mute function. Press it again to disable the mute function.

Laser Pen (for C1 Pro): Press this button briefly to activate the laser pen, enabling laser pen demonstration. Press it again to disable the laser pen function.

③ Home Button: Press this button to access the home operation interface.

④ Menu/Settings Button: On the APP playback interface, press this button briefly to access the APP menu. From there, you can perform functions such as fast forward, rewind, and episode selection, depending on the features provided by the APP. Long press this button to access the projector's system settings, where you can adjust functions like WiFi and projection modes.

⑤ Back Button: Press this button briefly to return to the previous menu. Long press it to return to the home interface.

⑥ Voice Button: Hold down this button to activate the intelligent voice function. Release it to end the function.

⑦ Volume+: Press this button briefly to gradually increase the volume. Long press it to quickly increase the volume.

⑧ Volume-: Press this button briefly to gradually decrease the volume. Long press it to quickly decrease the volume.

⑨ Five-way Button: Press the Up/Down/Left/Right/OK buttons briefly to select and confirm options in the basic

8 To connect to Wi-Fi

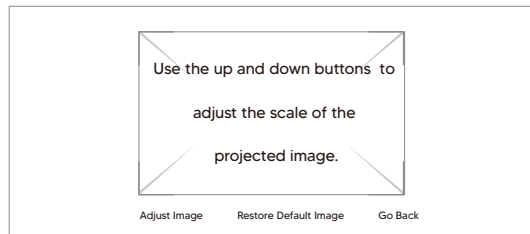
Enter the homepage > Select "Setting" > choose Network settings > Select the Wireless Connection > Wireless Switch > ON.

9 Keystone Correction

Manual Adjustment through Focusing Ring.

10 Screen Zoom

Enter the homepage > Select "Setting" > select "Projection Settings" > select "Zoom" to scale the projected image proportionally with the up and down keys on the remote control.



11 Wireless Screen Mirroring

Click Homepage "CAST" APP

1, check if CAST app is installed on your devices.

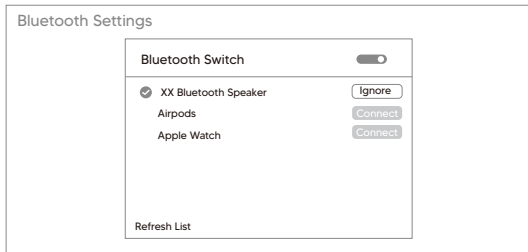
If not, download it on devices.

2, Connect your devices to the same Wi-Fi

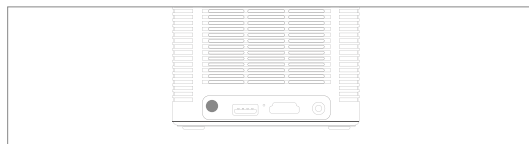
3, Enter the PIN code of TV on your phone

12 Audio Output

Bluetooth Headphones: Enter the homepage "Settings" > select "Sound Settings" > "Sound Output Devices" > "Project Speaker/Bluetooth Speaker" >Refresh.



External Speakers/Wired Headphones: Connect the audio device or headphones to the standard 3.5mm audio jack on the back of the projector. .



Note: This jack is set as the external speaker output by default. When using headphones, please adjust the insertion depth accordingly.

13 HDMI Function

HDMI OUT Smart Box (for X1): Used to synchronize the contents of the projector with an electronic screen. It can also be used to screen-mirror mobile device contents through the projector onto the electronic screen, making ordinary electronic screens intelligent.

14 System Version and Upgrade

Enter the Home page, select "Setting" > "About the Projector" > Choose "Version Upgrade".

